

# The P Series

## Alton Inline Lever Lever



External Lever



Internal Lever

### Features & Benefits

- Solid die cast aluminium construction with weight balanced spring cassette  
The perfect balance between price and performance
- Compact baseplate with screws in close proximity  
Combats lever attack
- Sculpted ergonomic lever and low friction nylon bush  
Easy to grip and smooth action
- Supplied with screw and spindle pack to suit 60-70mm profiles  
Everything needed for installation included
- Colour coordinated screw heads  
Perfectly matching hardware, even down to the smallest details



White



Black



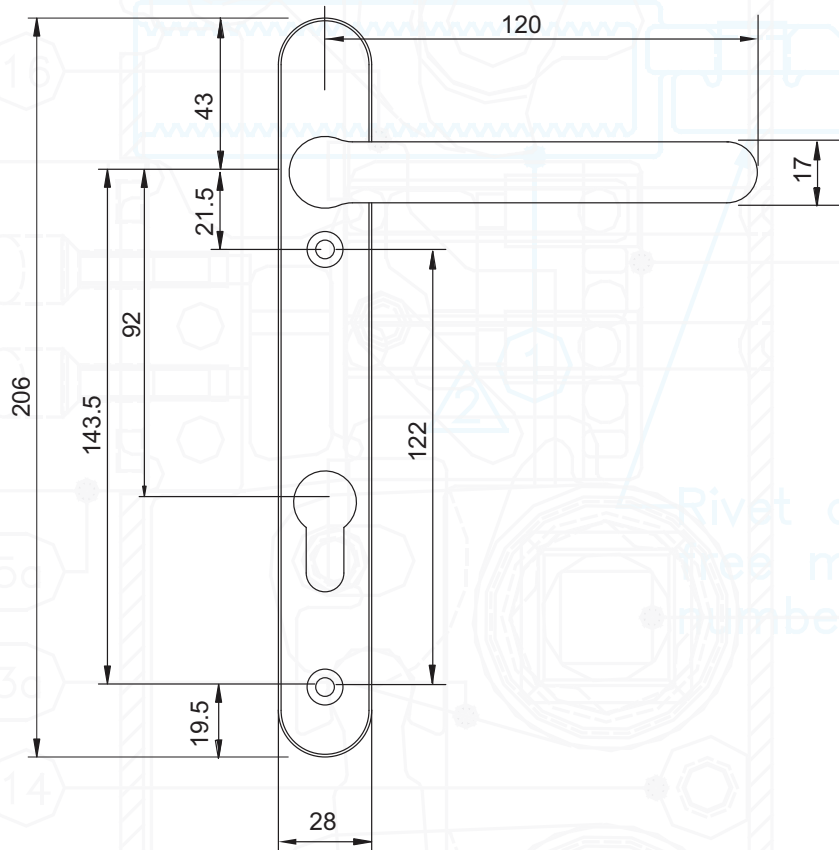
Silver



Gold

Fab&Fix

# Alton Inline Lever Lever



All dimensions are shown in millimetres

## Additional Benefits

- **Baseplate in common with all Alton handles**  
Same routing detail regardless of chosen variant
- **Wide backplate**  
To suit cylinder guards and accommodate larger cylinder preparation
- **Supplied fully assembled**  
Simple and quick installation, no need to fit springs or lever
- **Supplied with care instructions**  
Helps the homeowner to keep the hardware in optimal condition
- **Silicon Site-Protectors available**  
Ensures perfect condition after installation
- **Each part packaged in a separate chamber, but supplied as a set**  
No scratching of parts during transit

## Technical Specification

Designed for PVC-U and Composite doors

All finishes salt spray tested to 480 hours  
(BS EN 1670: Class 5)

Tested to 200,000 cycles

92mm PZ

Includes screw and spindle pack suitable for 60mm - 70mm profiles (1 x 8mm x 120mm spindle, 2 x M5 x 70mm colour coordinated machine screws, 2 x M5 x 80mm colour coordinated machine screws)

## Product Codes

Alton Inline Lever Lever

White	Black	Silver	Gold
1B000	1B001	1B002	1B003